



Government of **Western Australia**
Department of **Water and Environmental Regulation**

Shire of Boyup Brook Non-Potable Strategic Community Water Supplies Plan



Department of Water and Environmental Regulation

Rural Water Planning

Shire of Boyup Brook

February 2026

Department of Water and Environmental Regulation
Prime House, 8 Davidson Terrace
Joondalup Western Australia 6027
Locked Bag 10 Joondalup DC WA 6919

Phone: 08 6364 7000

Fax: 08 6364 7001

National Relay Service 13 36 77

wa.gov.au/dwer

© Government of Western Australia

February 2026

This work is copyright. You may download, display, print and reproduce this material in unaltered form only (retaining this notice) for your personal, non-commercial use or use within your organisation. Apart from any use as permitted under the *Copyright Act 1968*, all other rights are reserved. Requests and inquiries concerning reproduction and rights should be addressed to the Department of Water and Environmental Regulation.

Acknowledgements

Throughout the development of this Strategic Community Water Supply plan a number of people from the Rural Water Planning section in the Department of Water and Environment Regulation (the department) were involved:

Sherrie Anderson, Rosie Bell, Tracy Calvert, Mell Culhane, Elizabeth Tanner, Sandy Turton-Parker and Renae Thorpe.

The department would also like to thank the Shire of Boyup Brook and the Water Corporation for their advice, support and assistance during the preparation of this plan.

For more information about this plan, contact
Rural Water Planning, 1800 780 300.

Cover photograph: Flax Mill Water Tanks, Shire of Boyup Brook

Disclaimer

This document has been published by the Department of Water and Environmental Regulation. Any representation, statement, opinion or advice expressed or implied in this publication is made in good faith and on the basis that the Department of Water and Environmental Regulation and its employees are not liable for any damage or loss whatsoever which may occur as a result of action taken or not taken, as the case may be in respect of any representation, statement, opinion or advice referred to herein. Professional advice should be obtained before applying the information contained in this document to particular circumstances.

This publication is available at our website wa.gov.au/dwer or for those with special needs it can be made available in alternative formats such as audio, large print, or Braille.

Contents

| | |
|---|----|
| Summary | 2 |
| Introduction | 3 |
| Strategic community water supplies and agricultural area dams | 4 |
| Shire of Boyup Brook map | 5 |
| Strategic community water supply access | 6 |
| Overview of different fill points | 6 |
| Swipe card systems | 6 |
| Shire of Boyup Brook SCWS sites | 7 |
| Shire Depot dam | 8 |
| Shire Depot dam - Site Description | 9 |
| Dinninup Fast-Fill Emergency Water Station | 10 |
| Dinninup Fast-Fill Emergency Water Station - Site Description | 11 |
| Flax Mill tanks | 12 |
| Flax Mill tanks - Site Description | 13 |
| Railway Reserve dam | 14 |
| Railway Reserve dam - Site Description | 15 |
| Reservoir Road dam | 16 |
| Reservoir Road dam - Site Description | 17 |
| Sporting Rec dam | 18 |
| Sporting Rec dam - Site Description | 19 |
| Wilga Town dam | 20 |
| Wilga Town dam - Site Description | 21 |
| Mayanup Hall fire emergency tank | 22 |
| Mayanup Hall fire emergency tank - Site Description | 23 |
| Tonebridge fire emergency tank | 24 |
| Tonebridge fire emergency tank - Site Description | 25 |
| Wilga Hall fire emergency tank | 26 |
| Wilga Hall fire emergency tank - Site Description | 27 |
| Wilga Old Railway dam | 28 |
| Wilga Old Railway dam - Site Description | 29 |
| Boyup Brook Airstrip tank | 30 |
| Boyup Brook Airstrip Tank - Site Description | 31 |
| Glossary | 32 |

Summary

Water supply planning is essential in rural areas and requires collaboration, involvement and participation from all stakeholders, including farmland communities, local government authorities (LGAs) and State Government agencies as part of an integrated approach to sustainable water supply for the future.

This plan provides information for the Shire and farmers on the location of strategic community water supplies (SCWS). It advises how to access non-potable water for emergency stock watering and firefighting purposes, including the facilities available at each site.

Introduction

Over the past 40 years, recurrent water supply problems have affected the dryland agricultural region. Emerging climate changes are likely to increase the occurrences of low rainfall years, resulting in water shortages and restrictions in rural communities.

As farmers face long-term water security challenges, they are encouraged to proactively develop and maintain on-farm water infrastructure to better prepare for dry periods.

Rural water planning recognises the importance of preparing for these events to increase the opportunities for delivering an assured water supply to farmland communities in the dryland agricultural areas of Western Australia (WA).

SCWS planning is one of the key roles of the Department of Water and Environmental Regulation's (the department's) rural water program. The aim is to safeguard dryland agricultural areas wherever possible against serious water deficiencies.

While landholder self-sufficiency must remain the primary objective, the rural water program recognises the importance of emergency off-farm water supplies to farming communities. It also builds on the SCWS network across the dryland agricultural area through the Community Water Supplies Partnership (CWSP) program and the Agricultural Areas (AA) dam works program.

Both programs establish and improve non-potable water supplies to ensure that water is available for emergency livestock watering and firefighting. The CWSP program aims to reduce reliance on potable scheme water supplies for non-potable needs, and to increase water availability for public amenities such as sportsgrounds.

This SCWS plan has been compiled for the Shire of Boyup Brook to provide a clear description of each of the SCWS in the Shire available for firefighting purposes, and to farmers and farming communities in times of emergency.

Strategic community water supplies and agricultural area dams

A network of SCWS has been developed across WA's dryland agricultural areas to provide an important source of non-potable water for farming and firefighting needs.

These supplies are for emergency use in times when low rainfall causes on-farm supplies to become depleted and farmers need to travel to access water for livestock and essential farming purposes.

Vesting of the strategic dams and bores in each LGA varies, with some sites owned by government agencies (including the department), Water Corporation, the LGA itself, or by private entities where an agreement has been made to allow access.

It is important that these water supplies are carefully managed to ensure water is available during times of emergency.

The department keeps in regular contact with rural communities to monitor the condition of SCWS and identify and address any maintenance issues.

Each year, the department's rural water program undertakes works to maintain and upgrade sites vested with it and sites in priority areas vulnerable to dry conditions.

AA dams have been developed since the early 1990s to provide water and support the growth of farming in the dryland agricultural area. There are about 480 of the original 681 AA dams that range from high value to no value in terms of their condition and serviceability.

SCWS are a subset of the AA dams that are reliable, in good to excellent repair and retain a high value. The department uses LGA maps to determine which sites are worth upgrading and to identify priority areas to develop new SCWS.

Figure 1 shows the location of the SCWS and AA dams in the Shire of Boyup Brook, with symbols indicating the capacity, vesting and values of each site.

Shire of Boyup Brook map

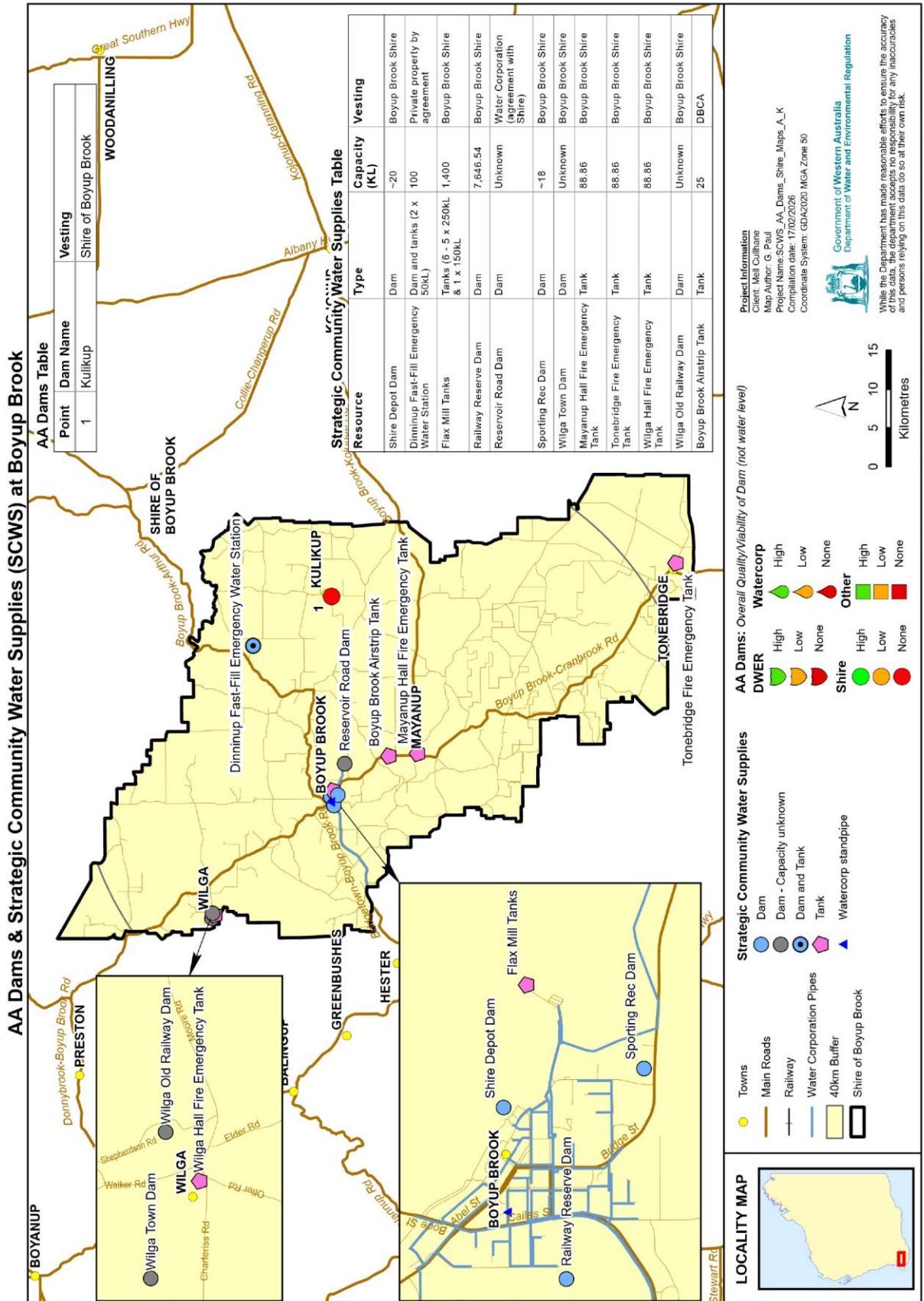


Figure 1- Location of SCWS (at 17 February 2026)

Strategic community water supply access

Overview of different fill points

Each SCWS will have a fill point to allow access to water supply for agricultural purposes. Each fill point will have a camlock fitting. Standard sizes of camlocks include 50 mm (2 inch) and an 80 mm (3 inch) fitting and in some cases a 100 mm (4 inch) connection is fitted for firefighting purposes. These camlock fittings will be available where there is a tank, standpipe, swipe card system or bore fill point. When accessing water directly from dams without a tank storage, you will need to bring your own pump to extract water.

Swipe card systems

Swipe card systems are metered fill points that require a swipe card or fob from your LGA to access the water supply. Contact your local LGA office to obtain a swipe card to access these water supplies.

During emergencies such as bushfires the LGA can switch the swipe card system to allow access without a swipe card. All local fire appliances swipe card access. The emergency access contact is the Exec. Manager of Operations on 0419 777 033.

Below are examples of different fill points you may come across in the LGA.



Figure 1: Standard tank camlock fittings



Figure 2: Swipe Card stand pipe station

Shire of Boyup Brook SCWS sites

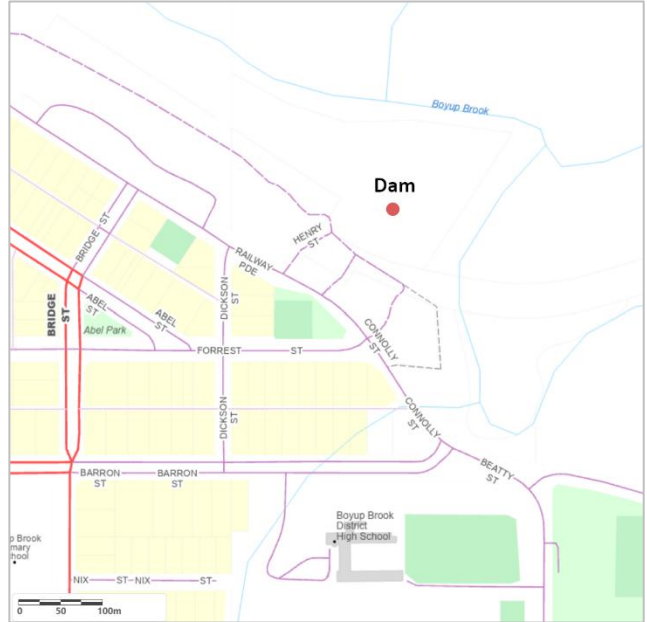
| Site name | Location |
|--|--|
| Shire Depot Dam | -33.832404, 116.392652 8 Henry Street, Boyup Brook. |
| Dinninup Fast-Fill Emergency Water Station | -33.74284, 116.60417 Hicks Road, Dinninup. (*Rhodes Pastoral Co.) |
| Flax Mill Tanks | -33.833581, 116.401107 Jackson Street, Flax Mill Caravan Park, Boyup Brook. |
| Railway Reserve Dam | -33.835802, 116.380477 William Street, Boyup Brook. |
| Reservoir Road dam | -33.849111, 116.438158 Reservoir Road, Boyup Brook (*Water Corp.) |
| Sporting Rec Dam | -33.840374, 116.395224 Beatty Street, Boyup Brook. |
| Wilga Town Dam | -33.693163, 166.224369 84 Charteriss Road, Wilga. |
| Mayanup Hall Fire Emergency Tank | -33.932468, 116.452475 1 Main Street, Mayanup. |
| Tonebridge Fire Emergency Tank | -34.235064, 116.71783 Boyup Brook-Cranbrook Road, Tonebridge. |
| Wilga Hall Fire Emergency Tank | -33.695047, 116.228874 17 Walker Road, Wilga. |
| Wilga Old Railway Dam | -33.693784, 116.231163 Shepherdson Road, Wilga. |
| Boyup Brook Airstrip Tank | -33.899013, 116.449194 Boyup Brook-Kojonup Road, Mayanup. |

Description of Community Water Supplies

Shire Depot dam



Aerial of dam



Location



Dam



Signage at entrance

Shire Depot dam - Site Description

| | |
|---------------------|--|
| Vesting | Shire of Boyup Brook |
| Purpose | Strategic community water supply for agricultural purposes, including emergency stock and firefighting water |
| Associated reserve | N/A |
| Catchment type | Surface |
| Catchment area (ha) | Unknown |

Location and coordinates

Location: 8 Henry Street, Boyup Brook

| | |
|-----------|-------------|
| Latitude | -33.832404 |
| Longitude | 116.392652 |
| Eastings | 443830.105 |
| Northings | 6256241.291 |

Water supply and access

| | |
|---------------------------|--|
| Structure type | Dam |
| Capacity | ~20 000m ³ |
| Tank storage | Nil |
| Standpipe Y/N | Yes |
| Swipe card Y/N | Yes, contact shire to register for use |
| Pump available Y/N | Yes |
| Heavy vehicle access | Yes |
| Turnaround area | Yes |
| Emergency access contacts | Shire Depot – 9765 1220 |

Dinninup Fast-Fill Emergency Water Station



Aerial view



Location



Dam



Solar pump



Signage



Poly tanks

Dinninup Fast-Fill Emergency Water Station - Site Description

| | |
|---------------------|--|
| Vesting | Private property (D. F.D Rhodes Pty Ltd) on agreement with Shire |
| Purpose | Strategic community water supply for firefighting water only. |
| Associated reserve | NIL |
| Catchment type | Earth, spring fed dam |
| Catchment area (ha) | 69.1 |

Location and coordinates

Location: Hicks Road, Dinninup

| | |
|-----------|-------------|
| Latitude | -33.74284 |
| Longitude | 116.60417 |
| Eastings | 463348.128 |
| Northings | 6266279.862 |

Water supply and access

| | |
|---------------------------|---|
| Structure type | Dam and Poly tanks |
| Capacity | 2 x 50,000 litre tanks |
| Camlock coupling sizes | 2 x 75mm, 2 x 50mm, 2 x 38mm |
| Standpipe Y/N | Yes, when used with fast-fill trailer 2000L/90sec |
| Pump Y/N | Yes, solar |
| Heavy vehicle access | Yes |
| Turnaround area | Yes, one way traffic flow |
| Supply notes | Emergency fire emergency use only site. Fast flow set-up and can load 6 vehicles at once. Pump from dam refills tanks automatically |
| Emergency access contacts | SoBB CBFCO – Ben Thompson 0427 673 072 Land Manager – Michael Wright 0427 191 785 |

Flax Mill tanks



Aerial view of tanks



Location



Above: Six tanks



Standpipe

Flax Mill tanks - Site Description

| | |
|---------------------|--|
| Vesting | Shire of Boyup Brook |
| Purpose | Strategic community water supply for agricultural purposes, including emergency stock and firefighting water |
| Associated reserve | N/A |
| Catchment type | Roof runoff |
| Catchment area (ha) | 0.37 ha |

Location and coordinates

Location: Lot 336 Jackson Street, Flax Mill Caravan Park, Boyup Brook

| | |
|-----------|-------------|
| Latitude | -33.83351 |
| Longitude | 116.401107 |
| Eastings | 444585.722 |
| Northings | 6256148.144 |

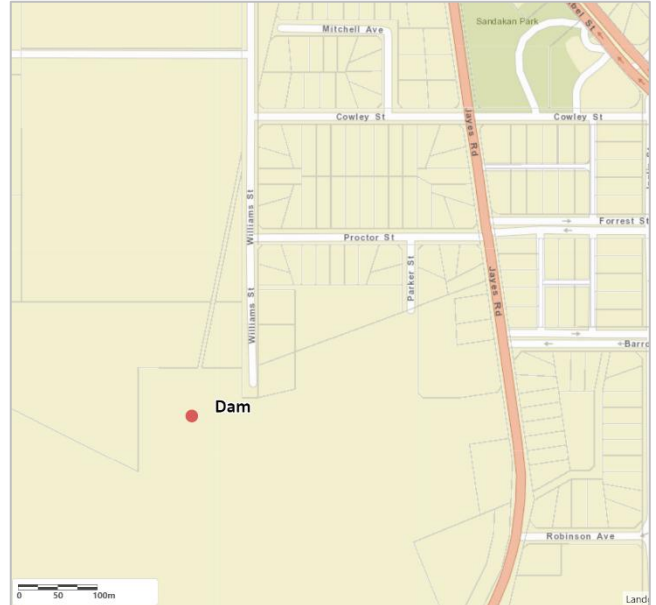
Water supply and access

| | |
|---------------------------|--|
| Structure type | Steel tanks x 6 |
| Tank capacity | 5 x 250,000 Litres, 1 x 150,000 |
| Camlock coupling sizes | (3 inch) and 100 mm (4 inch) outlets |
| Standpipe Y/N | Yes |
| Swipe Card Y/N | No - Key access from shire |
| Pump available Y/N | Yes |
| Heavy vehicle access | Yes |
| Turnaround area | Yes |
| Emergency access contacts | Shire Depot – 9765 1220 – AH: 0419 777 033 |

Railway Reserve dam



Aerial view of Railway Reserve



Location



Railway Reserve dam

Railway Reserve dam - Site Description

| | |
|---------------------|--|
| Vesting | Shire of Boyup Brook |
| Purpose | Strategic community water supply for firefighting water only |
| Associated reserve | R16199 |
| Catchment type | Earth |
| Catchment area (ha) | 46 ha |

Location and coordinates

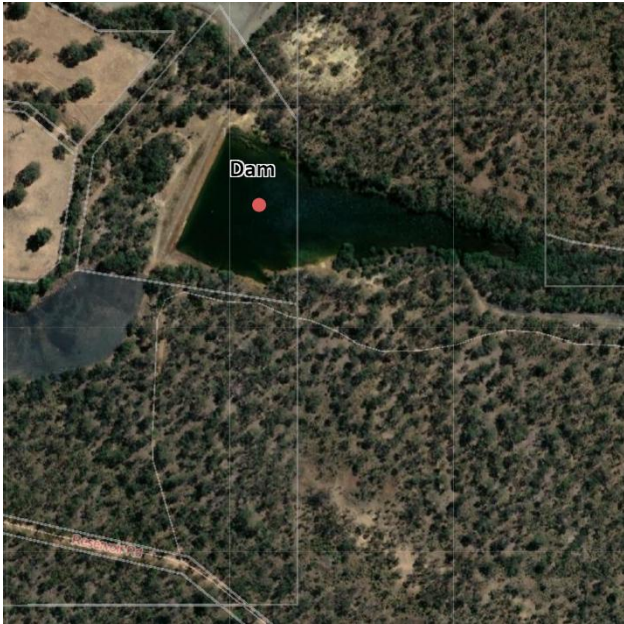
Location: William Street, Boyup Brook

| | |
|-----------|-------------|
| Latitude | -33.835802 |
| Longitude | 116.380477 |
| Eastings | 442723.709 |
| Northings | 6255882.097 |

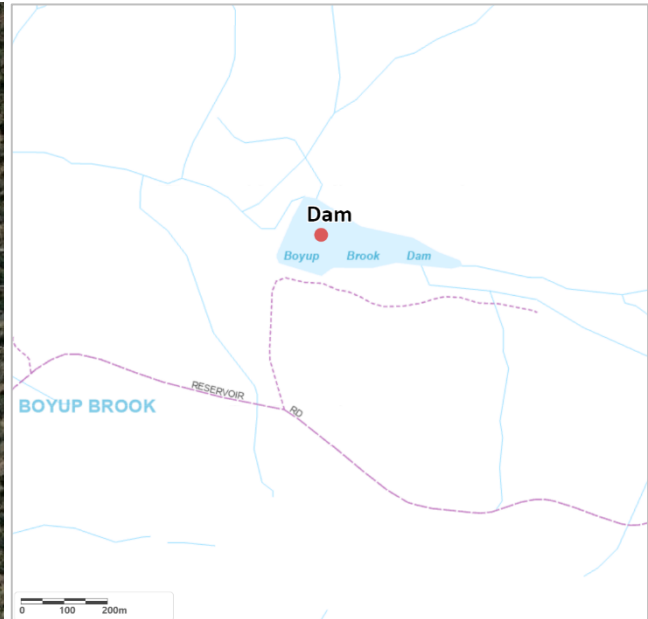
Water supply and access

| | |
|---------------------------|--|
| Structure type | Concrete dam |
| Capacity | 7,646,540 Litres |
| Standpipe Y/N | No |
| Pump available Y/N | No |
| Heavy vehicle access | No |
| Turnaround area | No |
| Emergency access contacts | Shire Depot – 9765 1220 – AH: 0419 777 033 |

Reservoir Road dam



Aerial view of dam



Location



Dam



Temporary standpipe

Reservoir Road dam - Site Description

| | |
|---------------------|--|
| Vesting | Water Corporation (Standing agreement with Shire regarding use in fire emergencies & drought) |
| Purpose | Strategic community water supply for agricultural purposes, including emergency stock and firefighting water |
| Associated reserve | R 47025 |
| Catchment type | Earth |
| Catchment area (ha) | 92.7 |

Location and coordinates

Location: Reservoir Road, Boyup Brook

| | |
|-----------|-------------|
| Latitude | -33.849111 |
| Longitude | 116.438158 |
| Eastings | 447986.417 |
| Northings | 6254430.940 |

Water supply and access

| | |
|---------------------------|---|
| Structure type | Dam |
| Dam capacity | Unknown |
| Tank storage | Nil |
| Standpipe Y/N | No, temp standpipe can be installed as required |
| Pump available Y/N | No, temp pump can be installed as required |
| Heavy vehicle access | Yes |
| Turnaround area | Yes |
| Supply notes | Water Corporation authorisation required for use of water |
| Emergency access contacts | Shire Depot – 9765 1220 – AH: 0419 777 033 |

Sporting Rec dam



Aerial view of dam



Location



Dam



Signage at entrance

Sporting Rec dam - Site Description

| | |
|---------------------|--|
| Vesting | Shire of Boyup Brook |
| Purpose | Strategic community water supply for agricultural purposes, including emergency stock and firefighting water |
| Associated reserve | R 1454 |
| Catchment type | Roads & drains |
| Catchment area (ha) | Unknown |

Location and coordinates

Location: Beatty Street (Sports Complex)

| | |
|-----------|-------------|
| Latitude | -33.840374 |
| Longitude | 116.395224 |
| Eastings | 443992.794 |
| Northings | 6255483.822 |

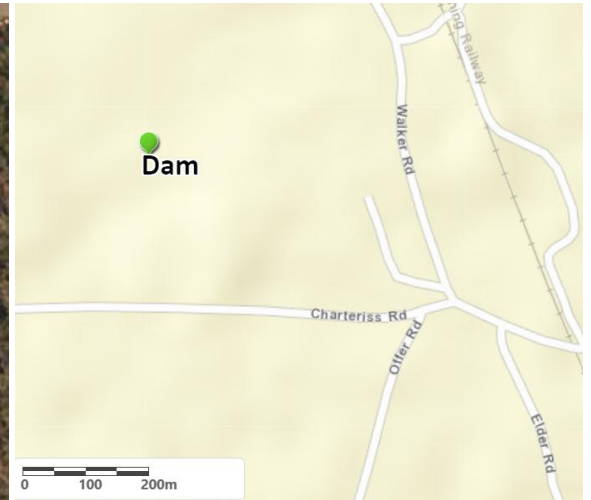
Water supply and access

| | |
|---------------------------|---|
| Structure type | Dam |
| Capacity | ~18 000m ³ |
| Tank storage | Nil |
| Standpipe Y/N | No |
| Swipe card Y/N | No |
| Pump available Y/N | Yes |
| Heavy vehicle access | Yes |
| Turnaround area | Yes |
| Supply Comments | Primary use to reticulate sports complex – Refilled from Depot Dam. |
| Emergency access contacts | Shire Depot – 9765 1220 – AH: 0419 777 033 |

Wilga Town dam



Aerial of dam



Location



Wilga Town dam

Wilga Town dam - Site Description

| | |
|---------------------|--|
| Vesting | Shire of Boyup Brook |
| Purpose | Strategic community water supply for agricultural purposes, including emergency stock and firefighting water |
| Associated reserve | R 46750 |
| Catchment type | Earth |
| Catchment area (ha) | 9.8 |

Location and coordinates

Location: Wilga Townsite

| | |
|-----------|-------------|
| Latitude | -33.693163 |
| Longitude | 116.224369 |
| Eastings | 428740.329 |
| Northings | 6271496.611 |

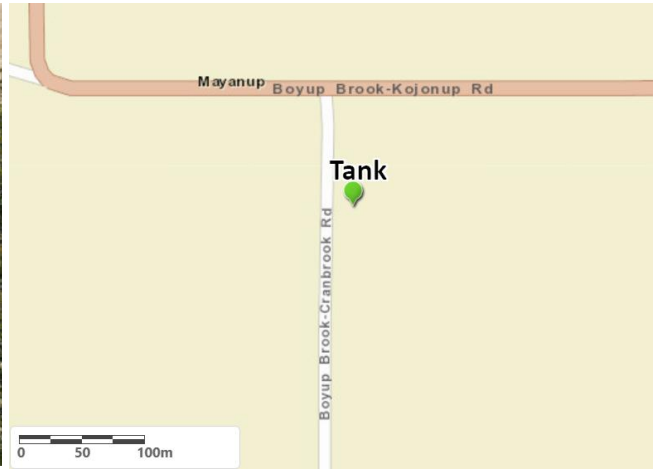
Water supply and access

| | |
|---------------------------|--|
| Structure type | Dam |
| Capacity | Unknown |
| Tank storage | No |
| Standpipe Y/N | No, temp standpipe can be installed for emergencies |
| Swipe card Y/N | No |
| Pump available Y/N | No, can connect fast-fill trailer |
| Heavy vehicle access | No – 4x4 access by light vehicles only |
| Turnaround area | No |
| Supply Comments | Currently utilised by some residents to supplement daily water usage. Access tracks and turn around points to be upgraded 2026 |
| Emergency access contacts | Benjinup BFB – Rob Imrie 0428 899 049 |

Mayanup Hall fire emergency tank



Aerial view of tank



Location



Mayanup Hall Fire Emergency Tank

Mayanup Hall fire emergency tank - Site Description

| | |
|---------------------|--|
| Vesting | Shire of Boyup Brook |
| Purpose | Strategic community water supply for agricultural purposes, including emergency stock and firefighting water |
| Associated reserve | R 20039 |
| Catchment type | Roof Top |
| Catchment area (ha) | 0.03 ha |

Location and coordinates

Location: 1 Main Street, Mayanup

| | |
|-----------|-------------|
| Latitude | -33.932468 |
| Longitude | 116.452475 |
| Eastings | 449396.983 |
| Northings | 6245196.826 |

Water supply and access

| | |
|---------------------------|---|
| Structure type | Tank |
| Capacity | 88 860.0 Litres |
| Camlock coupling sizes | 3" and 2" outlets |
| Standpipe Y/N | No, temp standpipe can be installed for emergencies |
| Pump available Y/N | No, can connect fast-fill trailer |
| Heavy vehicle access | Yes |
| Turnaround area | Yes |
| Emergency access contacts | Mayanup BFB – Ben Creek 0428 158 138 |

Tonebridge fire emergency tank



Aerial view of tank



Location



Tank outlets



Tonebridge Fire Emergency Tank

Tonebridge fire emergency tank - Site Description

| | |
|---------------------|--|
| Vesting | Shire of Boyup Brook |
| Purpose | Strategic community water supply for agricultural purposes, including emergency stock and firefighting water |
| Associated reserve | R 24951 |
| Catchment type | Roof Top |
| Catchment area (ha) | 0.02 ha |

Location and coordinates

Location: Tonebridge Country Club - Boyup Brook-Cranbrook Rd, Tonebridge

| | |
|-----------|-------------|
| Latitude | -34.235064 |
| Longitude | 116.71783 |
| Eastings | 474014.169 |
| Northings | 6211744.094 |

Water supply and access

| | |
|---------------------------|---|
| Structure type | Tank |
| Capacity | 88 860.0 Litres |
| Camlock coupling sizes | 3" and 2" outlets |
| Standpipe Y/N | No, temp standpipe can be installed for emergencies |
| Pump available Y/N | No, can connect fast-fill trailer |
| Heavy vehicle access | Yes |
| Turnaround area | Yes |
| Emergency access contacts | Tonebridge BFB – Matt Della-Gola 0427 767 177 |

Wilga Hall fire emergency tank



Aerial view of Wilga Hall and tank



Location



Wilga Hall Fire Emergency Tank

Wilga Hall fire emergency tank - Site Description

| | |
|---------------------|--|
| Vesting | Shire of Boyup Brook |
| Purpose | Strategic community water supply for agricultural purposes, including emergency stock and firefighting water |
| Associated reserve | R 20229 |
| Catchment type | Roof Top |
| Catchment area (ha) | 0.02 ha |

Location and coordinates

Location: 17 Walker Rd, Wilga

| | |
|-----------|-------------|
| Latitude | -33.695047 |
| Longitude | 116.228874 |
| Eastings | 428533.887 |
| Northings | 6271388.957 |

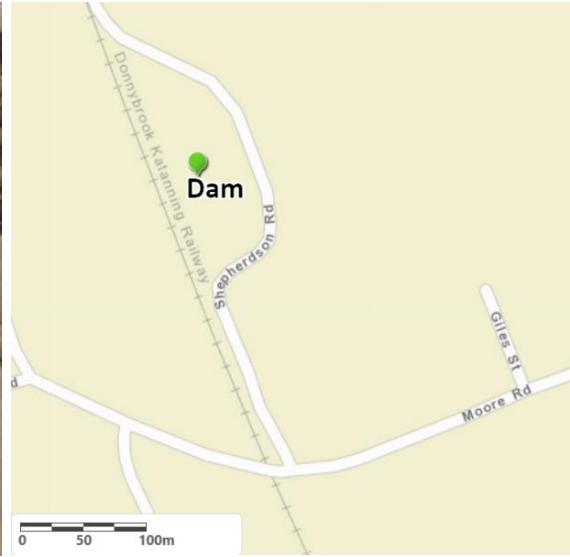
Water supply and access

| | |
|---------------------------|---|
| Structure type | Tank |
| Capacity | 88 860.0 Litres |
| Camlock coupling sizes | 3" and 2" outlets |
| Standpipe Y/N | No, temp standpipe can be installed for emergencies |
| Pump available Y/N | No, can connect fast-fill trailer |
| Heavy vehicle access | Yes |
| Turnaround area | Yes |
| Emergency access contacts | Benjinup BFB – Rob Imrie 0428 899 049 |

Wilga Old Railway dam



Aerial view of dam



Location



Wilga Old Railway Dam

Wilga Old Railway dam - Site Description

| | |
|---------------------|--|
| Vesting | Shire of Boyup Brook |
| Purpose | Strategic community water supply for agricultural purposes, including emergency stock and firefighting water |
| Associated reserve | R 29177 |
| Catchment type | Earth |
| Catchment area (ha) | 9 |

Location and coordinates

Location: 17 Walker Rd, Wilga

| | |
|-----------|-------------|
| Latitude | -33.693784 |
| Longitude | 116.231163 |
| Eastings | 428744.989 |
| Northings | 6271530.576 |

Water supply and access

| | |
|---------------------------|---|
| Structure type | Dam |
| Capacity | Unknown |
| Standpipe Y/N | No, temp standpipe can be installed for emergencies |
| Pump available Y/N | Yes – Key required to access |
| Heavy vehicle access | Yes |
| Turnaround area | Yes |
| Emergency access contacts | Benjinup BFB – Rob Imrie 0428 899 049 |

Boyup Brook Airstrip tank



Aerial view of tank



Location



Airfield tank refilling water bomber aircraft training

Boyup Brook Airstrip Tank - Site Description

| | |
|---------------------|--|
| Vesting | DBCA |
| Purpose | Strategic community water supply for firefighting water and water bomber reloading |
| Associated reserve | N/A |
| Catchment type | Earth – Pumped from neighbour's dam |
| Catchment area (ha) | 9 |

Location and coordinates

Location: 833 boyup Brook-Kojonup Rd, Mayanup

| | |
|-----------|-------------|
| Latitude | -33.899013 |
| Longitude | 116.449194 |
| Eastings | 449073.847 |
| Northings | 6248904.642 |

Water supply and access

| | |
|---------------------------|---|
| Structure type | Poly Tank |
| Tank capacity | 25 000 L |
| Camlock coupling sizes | 3 inch |
| Standpipe Y/N | No, temp standpipe can be installed for emergencies |
| Swipe Card Y/N | No |
| Pump available Y/N | Yes – Water Bomber Reloader Trailer & Equipment |
| Heavy vehicle access | Yes |
| Turnaround area | Yes |
| Emergency access contacts | CBFCO – Ben Thompson 0428 899 049 |

Glossary

| | |
|------------------------|--|
| Camlock | A male hose coupling fixed for connection of a water hose. Camlocks can be attached to fill points such as tanks, or standpipes to allow access to water supply. Camlock sizes vary from site to site and generally include 50 mm (2 inch), 80 mm (3 inch) as a standard. At some sites a 100 mm (4 inch) camlock has been included for firefighting purposes. |
| Catchment types | <p>Earth – land cleared, cambered, and compacted to provide a catchment area for surface water.</p> <p>Bitumen – catchment lined with bitumen to allow capture of surface water.</p> <p>Rock catchment – rock that slopes, has containment walls to capture surface water to a storage source (e.g. a tank or a concrete dam).</p> <p>Bore – a drilled casing that accesses ground water to provide a water supply.</p> <p>CBH – water is captured from CBH grain silo storage facility and stored in a dam or tank.</p> |
| Farm bot | A device fitted to some tanks to regularly record the water level and feed this information into a website. You can access this website at app.farmbot.com.au (Login ID: public.access Password: access1) to see water tank levels for tanks fitted with farm bots. |
| Fill point | Location where a water supply can be accessed from using camlock fittings either via standpipe, swipe card system, tank or bore. |
| Non-potable | Water not suitable for human consumption. |
| Solar pump | A pump powered through solar that pumps water from one location to another (e.g. from dam to dam or from dam to tank). |
| Staff gauges | A marker measuring tool positioned at surveyed depths in a dam to indicate water levels. |
| Standpipe | A pipe overhead, on a plinth or raised off the ground to provide a fill point for water supply. |
| Swipe card | A metered fill point requiring a card to be swiped to start pumping system. Contact the LGA for further information. |
| Vesting | Person or governing agency with responsibility for managing land. |