

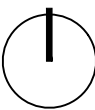
DRAWING REGISTER

DWG NO.	DESCRIPTION	REV
L01	KEY PLAN	C
L02	LANDSCAPE PLAN SHEET 1 OF 5	C
L03	LANDSCAPE PLAN SHEET 2 OF 5	C
L04	LANDSCAPE PLAN SHEET 3 OF 5	C
L05	LANDSCAPE PLAN SHEET 4 OF 5	C
L06	LANDSCAPE PLAN SHEET 5 OF 5	C
L07	SECTION SHEET 1 OF 4	C
L08	SECTION SHEET 2 OF 4	C
L09	SECTION SHEET 3 OF 4	C
L10	SECTION SHEET 4 OF 4	C

SANDAKAN RESERVE MASTER PLAN
SHIRE OF BOYUP BROOK
COVER SHEET

DATE
SCALE
DRAWING NO.
L000

REV
C



LOCAL COMMUNITY KEY

- SHIRE ADMINISTRATION BUILDING
- 1
- COMMUNITY CENTRE AND HALL
- 2
- ST JOHNS AMBULANCE CENTRE
- 3
- DFES BUILDING
- 4
- PIONEER MUSEUM
- 5



MASTER PLAN ELEMENT KEY

- 6
- SANDAKAN MEMORIAL REDEVELOPMENT
- 7
- ACTIVATED EVENTS SPACE
- 8
- YOUTH PRECINCT
- 9
- MAIN PLAYGROUND
- 10
- CARAVAN / CAMPER TRAILER PARKING
- 11
- REVISED PARKING LAYOUT
- 12
- DFES / ST JOHNS ACCESS AND PLAY PRECINCT PARKING
- 13
- RATIONALISED ADMINISTRATION PARKING
- 14
- SANDAKAN MEMORIAL PARKING
- 15
- ABEL STREET CROSSING
- 16
- DOG PARK
- 17
- BBQ AND SHELTER AND TABLE TENNIS

SCALE: 1:750 @ A1 size sheet

REV NO.	DESCRIPTION	DATE
C	ISSUED FOR CONSULTATION	02.07.25
B	DRAFT ISSUED FOR COUNCIL COMMENT	06.12.24
A	DRAFT ISSUED FOR DISCUSSION	23.08.24
		DATE

PROJECT NO.	
DESIGNED	DW
DRAWN	LP
CHECKED	DW
APPROVED	DW

SANDAKAN RESERVE MASTER PLAN
SHIRE OF BOYUP BROOK
OVERALL MASTER PLAN

DATE
SCALE 1:750 @ A1
DRAWING NO.
L00

REV
C

landscape planners pty ltd
urban | landscape | environment

PATH: P:\pro\24\2405 Sandakan Masterplan Boyup Brook\07 Drawings\01 CAD\03 Sheets\SK-02-CONCEPT DESIGN - REVISION.dwg

PLOT DATE: ---

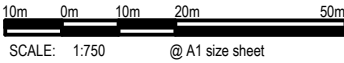
PLOTTED BY: LANDSCAPE PLANNERS

PAGE SETUP: ---

PLOT STYLE: MRWA_COL.CTB



- NOTES:
1. PLAY PRECINCT BY OTHERS
 2. DESIGN SUBJECT TO SITE SURVEY



REV NO.	DESCRIPTION	DATE
C	ISSUED FOR CONSULTATION	02.07.25
B	DRAFT ISSUED FOR COUNCIL COMMENT	06.12.24
A	DRAFT ISSUED FOR DISCUSSION	23.08.24
		DATE

PATH: P:\pro\24\2405 Sandakan Masterplan Boyup Brook\07 Drawings\01 CAD\03 Sheets\SK-02-CONCEPT DESIGN - REVISION.dwg

PROJECT NO.	
DESIGNED	DW
DRAWN	LP
CHECKED	DW
APPROVED	DW

SANDAKAN RESERVE MASTER PLAN
SHIRE OF BOYUP BROOK
KEY PLAN

DATE
SCALE 1:750 @ A1
DRAWING NO.
L01

REV
C



LOCAL COMMUNITY KEY

PROVIDE CONNECTION INCLUDING WAYFINDING SIGNAGE BETWEEN THE BOYUP BROOK WALK TRAIL AND NEW SCULPTURE TRAIL

1

MASTER PLAN ELEMENT KEY

- 2
- COMPACTED LATERITE GRAVEL TRAIL WITH HIDDEN SCULPTURES AND INTERPRETATIVE SIGNAGE
- 3
- RETAIN DEAD TREES FOR WILDLIFE HABITAT
- 4
- STRENGTHEN EXISTING BUSHLAND PLANTING WITH NATIVE SPECIES ENDEMIC TO THE SITE & PROVIDE INTERPRETATIVE SIGNAGE
- 5
- PROVIDE NATURAL LOG SEATING ADJACENT TO INTERPRETATIVE SIGNAGE



LANDSCAPE LEGEND

- ASPHALT
- CONCRETE
- COMPACTED GRAVEL

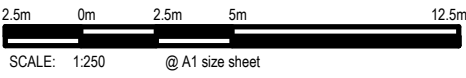
- STABILIZED GRAVEL (PUMP TRACK)
- MULCH ONLY
- IRRIGATED TURF

- MIXED NATIVE PLANTINGS (IRRIGATED)
- MIXED NATIVE PLANTINGS (NON IRRIGATED)
- BLEACHER SEATING (AS NOTED)
- RETAINING WALL (AS NOTED)

- EXISTING TREES
- DEAD TREE (TO BE RETAINED)
- TREES FOR REMOVAL

- NEW NATIVE TREE PLANTING
- DECIDUOUS STREET TREE PLANTING CREPE MYRTLES

- NOTES:
1. THIS MASTER PLAN HAS BEEN DEVELOPED FROM AERIAL PHOTOGRAPHY AND CADASTRAL DATA, AND IS INTENDED FOR USE AS A SPATIAL GUIDE ONLY, AND NOT FOR CONSTRUCTION.
2. SURVEY WILL BE REQUIRED FOR FURTHER MASTER PLAN REFINEMENT AND DETAILED DESIGN



SANDAKAN RESERVE MASTER PLAN
SHIRE OF BOYUP BROOK
MASTER PLAN DETAIL
SHEET 1 OF 5

DATE
SCALE 1:250 @ A1
DRAWING NO.
L02

REV
C



REV NO.	DESCRIPTION	DATE
C	ISSUED FOR CONSULTATION	02.07.25
B	DRAFT ISSUED FOR COUNCIL COMMENT	06.12.24
		DATE

PROJECT NO.	
DESIGNED	DW
DRAWN	LP
CHECKED	DW
APPROVED	DW

PATH: P:\pro\24\2405 Sandakan Masterplan Boyup Brook\07 Drawings\01 CAD\03 Sheets\SK-02-CONCEPT DESIGN - REVISION.dwg

PLOT DATE: ---

PLOTTED BY: LANDSCAPE PLANNERS

PAGE SETUP: ---

PLOT STYLE: MRWA_COL.CTB

- LOCAL COMMUNITY KEY
- ST JOHNS AMBULANCE CENTRE

1
- DFES BUILDING

2



- MASTER PLAN ELEMENT KEY
- 3

MAIN PLAYGROUND SPACE
- 4

FORMALISED ACCESS TO DFES AND ST JOHNS WITH SIGNAGE TO LIMIT VEHICLE CLASHES IN EMERGENCY
- 5

FORMALISED ASPHALT AND KERBED CROSSOVER TO CARPARKING AND ACCESS ROAD
- 6

CARPARK FOR THE PLAY PRECINCT UNIVERSAL AND PRAM ACCESS FROM CARPARK TO PLAY SPACE
- 7

HIDDEN SCULPTURE TRAIL HEAD AND INTERPRETATIVE SGNAGE
- 8

COMPACTED LATERITE GRAVEL TRAIL WITH HIDDEN SCULPTURES AND INTERPRETATIVE SIGNAGE
- 9

STRENGTHEN EXISTING BUSHLAND PLANTING WITH NATIVE SPECIES ENDEMIC TO THE SITE & PROVIDE INTERPRETATIVE SIGNAGE
- 10

IRRIGATED SHRUB AND GROUND COVER PLANTING ADJACENT TO CARPARK
- 11

NON IRRIGATED PLANTING

LANDSCAPE LEGEND

- ASPHALT

CONCRETE

COMPACTED GRAVEL

STABILIZED GRAVEL (PUMP TRACK)

MULCH ONLY

IRRIGATED TURF

MIXED NATIVE PLANTINGS (IRRIGATED)

MIXED NATIVE PLANTINGS (NON IRRIGATED)

BLEACHER SEATING (AS NOTED)

RETAINING WALL (AS NOTED)

EXISTING TREES

DEAD TREE (TO BE RETAINED)

TREES FOR REMOVAL

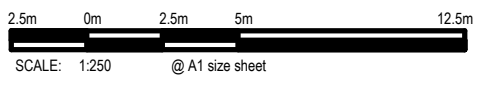
NEW NATIVE TREE PLANTING

DECIDUOUS STREET TREE PLANTING CREPE MYRTLES

NOTES:

1. THIS MASTER PLAN HAS BEEN DEVELOPED FROM AERIAL PHOTOGRAPHY AND CADASTRAL DATA, AND IS INTENDED FOR USE AS A SPATIAL GUIDE ONLY, AND NOT FOR CONSTRUCTION.

2. SURVEY WILL BE REQUIRED FOR FURTHER MASTER PLAN REFINEMENT AND DETAILED DESIGN



LOCAL COMMUNITY KEY

ST JOHNS AMBULANCE
CENTRE

1

CONNECTION TO ABEL STREET
NORTH WEST SIDE

2

JOINS L03



JOINS L06

LANDSCAPE LEGEND

- ASPHALT
- CONCRETE
- COMPACTED GRAVEL

- STABILIZED GRAVEL (PUMP TRACK)
- MULCH ONLY
- IRRIGATED TURF

- MIXED NATIVE PLANTINGS (IRRIGATED)
- MIXED NATIVE PLANTINGS (NON IRRIGATED)
- BLEACHER SEATING (AS NOTED)
- RETAINING WALL (AS NOTED)

- EXISTING TREES
- DEAD TREE (TO BE RETAINED)
- TREES FOR REMOVAL

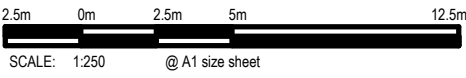
- NEW NATIVE TREE PLANTING
- DECIDUOUS STREET TREE PLANTING CREPE MYRTLES

NOTES:

- THIS MASTER PLAN HAS BEEN DEVELOPED FROM AERIAL PHOTOGRAPHY AND CADASTRAL DATA, AND IS INTENDED FOR USE AS A SPATIAL GUIDE ONLY, AND NOT FOR CONSTRUCTION.
- SURVEY WILL BE REQUIRED FOR FURTHER MASTER PLAN REFINEMENT AND DETAILED DESIGN

MASTER PLAN ELEMENT KEY

- 3 SANDAKAN MEMORIAL PRECINCT
- 4 ACCESSIBLE PATH OF TRAVEL FROM SANDAKAN RESERVE TO THE NORTH SIDE OF ABEL STREET INCLUDING PRAM RAMP
- 5 NEW CARPARK FOR THE MEMORIAL PRECINCT
- 6 ACCESSIBLE PATH OF TRAVEL TO MEMORIAL AREA
- 7 COMPACTED GRAVEL AREA WITH POWER AND WATER FOR COFFEE VAN AND GAZEBOS DURING MEMORIAL ACTIVATION
- 8 LEVEL IRRIGATED TURF AREA FOR USE DURING MEMORIAL ACTIVATION OR EVENTS
- 9 RETAINING WALL FOR LEVEL TURF AREA WITH STAIRS AND PATH TO ABEL STREET
- 10 IRRIGATED TURF BLEACHER SEATING CENTRED AROUND MEMORIAL
- 11 CONCRETE ACCESS PATHS TO STREETScape, PLAY AND YOUTH PRECINCT
- 12 IRRIGATED SHRUB AND GROUND COVER PLANTING BETWEEN MEMORIAL AND SHIRE ADMIN BUILDING
- 13 EXISTING ACCESS ROAD REMOVED AND AREA PLANTED
- 14 ASPHALT CARPARK AND KERBED CROSSOVER TO ABLE STREET
- 15 RAISED DECK STAGE AREA WITH SANDAKAN SCULPTURAL WALL BETWEEN BACK OF STAGE AND MEMORIAL



SANDAKAN RESERVE MASTER PLAN
SHIRE OF BOYUP BROOK
MASTER PLAN DETAIL
SHEET 3 OF 5

DATE
SCALE 1:250 @ A1
DRAWING NO.
L04

REV
C

landscape planners pty ltd
urban | landscape | environment

REV NO.	DESCRIPTION	DATE
C	ISSUED FOR CONSULTATION	02.07.25
B	DRAFT ISSUED FOR COUNCIL COMMENT	06.12.24
A	ISSUED FOR COUNCIL APPROVAL	

PROJECT NO.	
DESIGNED	DW
DRAWN	LP
CHECKED	DW
APPROVED	DW

PATH: P:\proj\24\2405 Sandakan Masterplan Boyup Brook\07 Drawings\01 CAD\03 Sheets\SK-02-CONCEPT DESIGN - REVISION.dwg

PLOT DATE: ---

PLOTTED BY: LANDSCAPE PLANNERS

PAGE SETUP: ---

PLOT STYLE: MRWA_COL.CTB



- LOCAL COMMUNITY KEY
- SHIRE ADMINISTRATION BUILDING

1
- COMMUNITY CENTRE AND HALL

2



- MASTER PLAN ELEMENT KEY
- 3

YOUTH PRECINCT
- 4

SKATE PARK WITH BOWL AND SKATE SKILLS AREAS
- 5

SHADE SHELTER WITH SEATING AND DRINK FOUNTAIN
- 6

RETAINING WALL AND BALUSTRADE WITH YOUTH PRECINCT ABOVE AND CARPARK BELOW.
- 7

STREETSCAPE AND PRECINCT PATH CONNECTIONS
- 8

RATIONISED CAR PARK ACCESS ROAD AND CAR PARKING
- 9

RATIONAISED CAR PARKING AND ACCESS ROAD FOR SHIRE ADMIN BUILDING
- 10

RATIONALISED ADMINISTRATION PARKING
- 11

ELECTRICAL VEHICLE CHARGING BAYS
- 12

STREET TREE PLANTING OF CREPE MYRTLES TO CONNECT TO ABEL STREET AND TOWN CENTRE
- 13

REMOVAL AND LANDSCAPING OF REDUNDANT CAR PARK AREAS
- 14

RATIONAISE ANGLED STREET PARKING ON COWLEY STREET
- 15

STRENGTHEN ACCESS BETWEEN COMMUNITY CENTRE AND YOUTH PRECINCT WITH ACCESS PATHS
- 16

STREET TREE PLANTING OF CREPE MYRTLES TO CONNECT TO ABEL STREET AND TOWN CENTRE

LANDSCAPE LEGEND

- ASPHALT

CONCRETE

COMPACTED GRAVEL
- STABILIZED GRAVEL (PUMP TRACK)

MULCH ONLY

IRRIGATED TURF
- MIXED NATIVE PLANTINGS (IRRIGATED)

MIXED NATIVE PLANTINGS (NON IRRIGATED)

BLEACHER SEATING (AS NOTED)

RETAINING WALL (AS NOTED)
- EXISTING TREES

DEAD TREE (TO BE RETAINED)

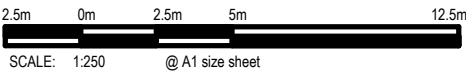
TREES FOR REMOVAL
- NEW NATIVE TREE PLANTING

DECIDUOUS STREET TREE PLANTING CREPE MYRTLES

- NOTES:
1.

THIS MASTER PLAN HAS BEEN DEVELOPED FROM AERIAL PHOTOGRAPHY AND CADASTRAL DATA, AND IS INTENDED FOR USE AS A SPATIAL GUIDE ONLY, AND NOT FOR CONSTRUCTION.
2.

SURVEY WILL BE REQUIRED FOR FURTHER MASTER PLAN REFINEMENT AND DETAILED DESIGN



REV NO.	DESCRIPTION	DATE
C	ISSUED FOR CONSULTATION	02.07.25
B	DRAFT ISSUED FOR COUNCIL COMMENT	06.12.24
		DATE

PATH: P:\pro\24\2405 Sandakan Masterplan Boyup Brook\07 Drawings\01 CAD\03 Sheets\SK-02-CONCEPT DESIGN - REVISION.dwg

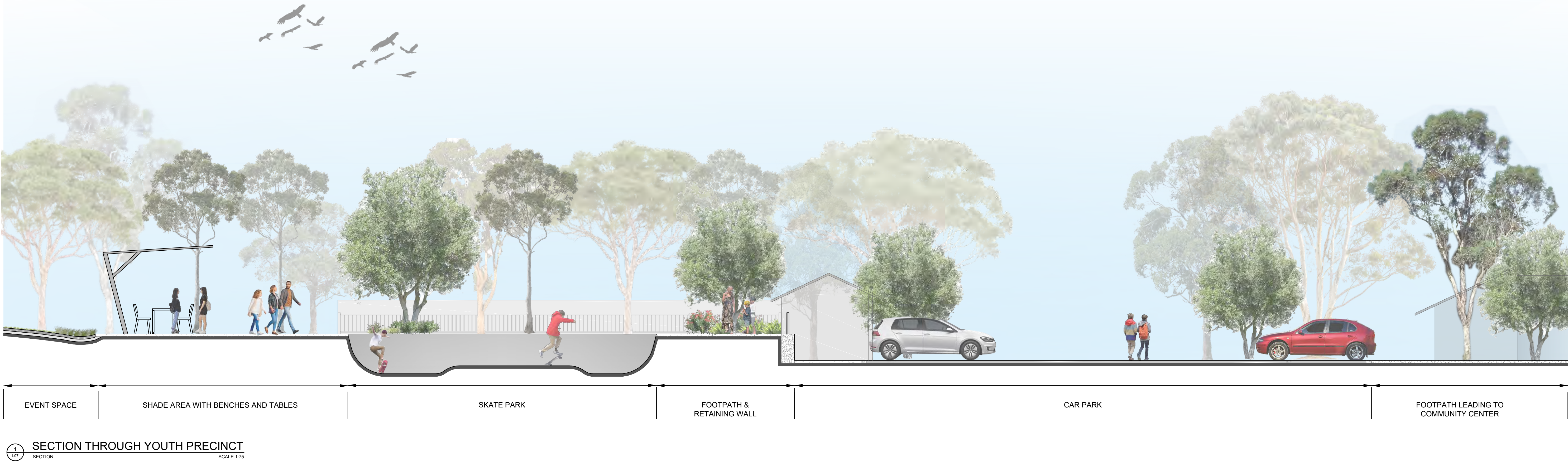
PROJECT NO.	
DESIGNED	DW
DRAWN	LP
CHECKED	DW
APPROVED	DW

PLOT DATE: --- PLOTTED BY: LANDSCAPE PLANNERS PAGE SETUP: --- PLOT STYLE: MRWA_COL.CTB

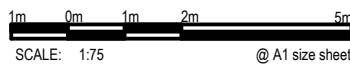
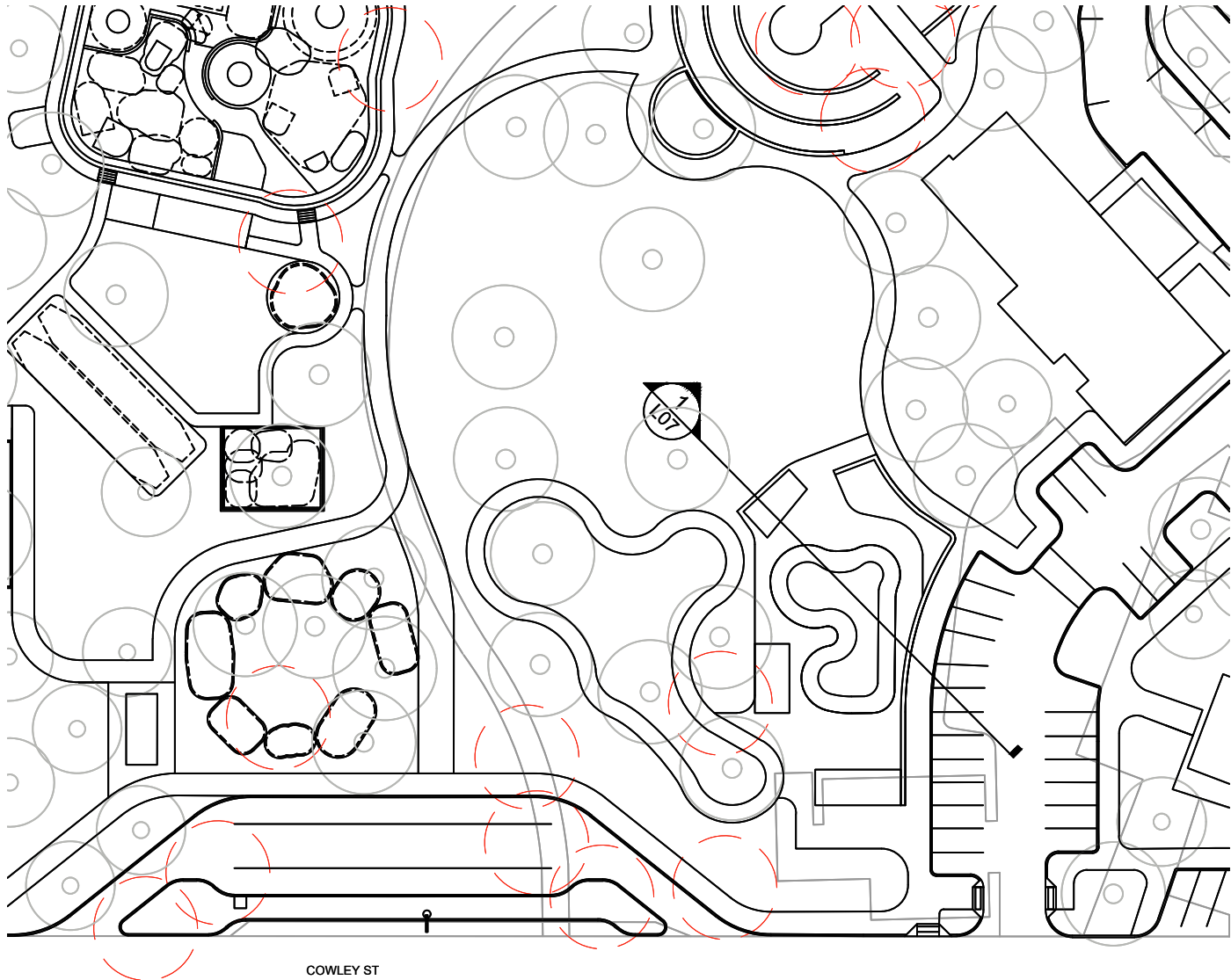
SANDAKAN RESERVE MASTER PLAN
SHIRE OF BOYUP BROOK
MASTER PLAN DETAIL
SHEET 5 OF 5

DATE	
SCALE	1:250 @ A1
DRAWING NO.	L06
REV	C





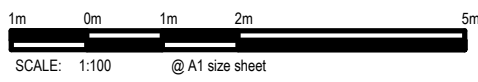
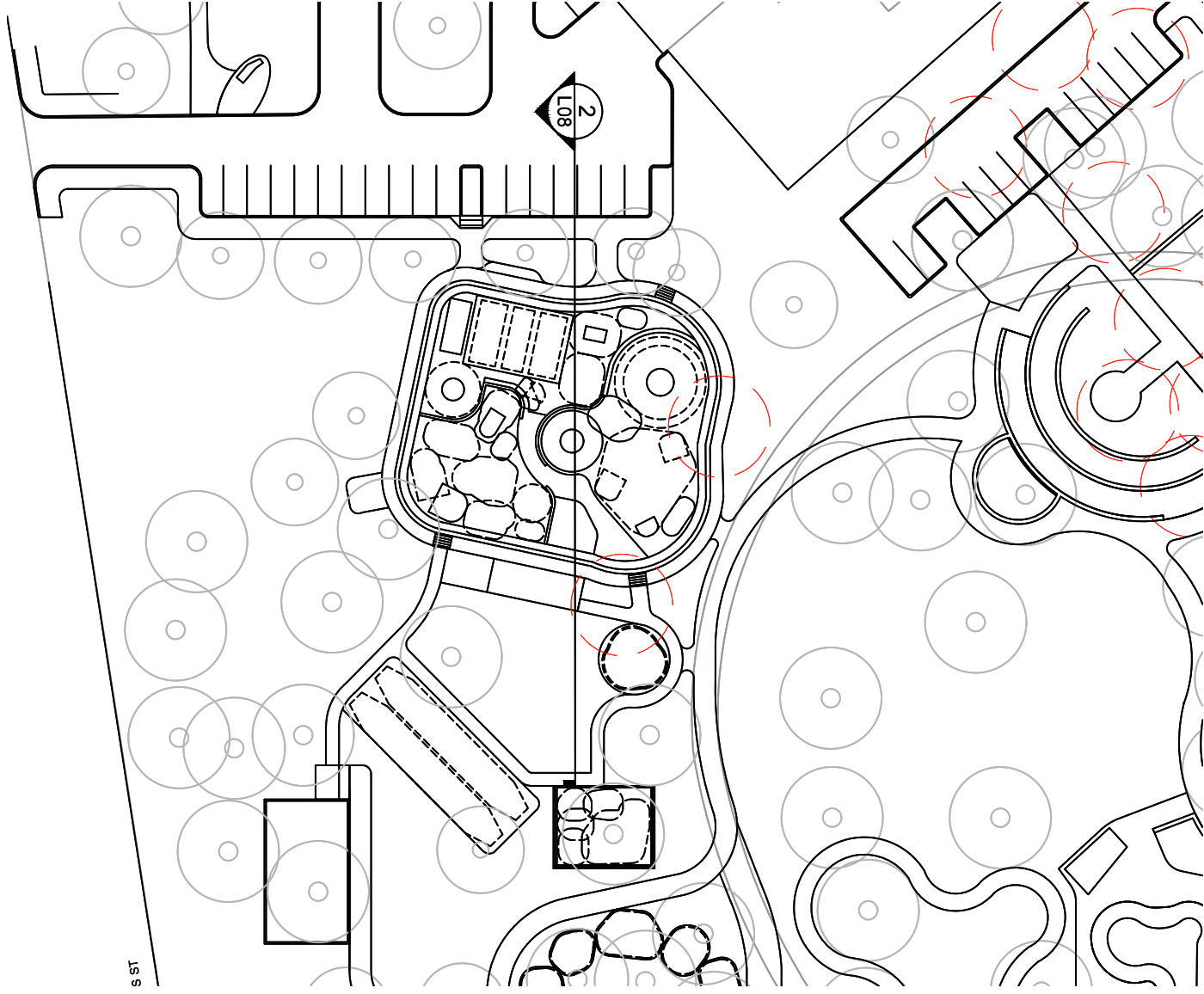
KEY PLAN





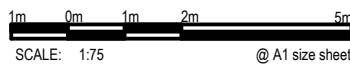
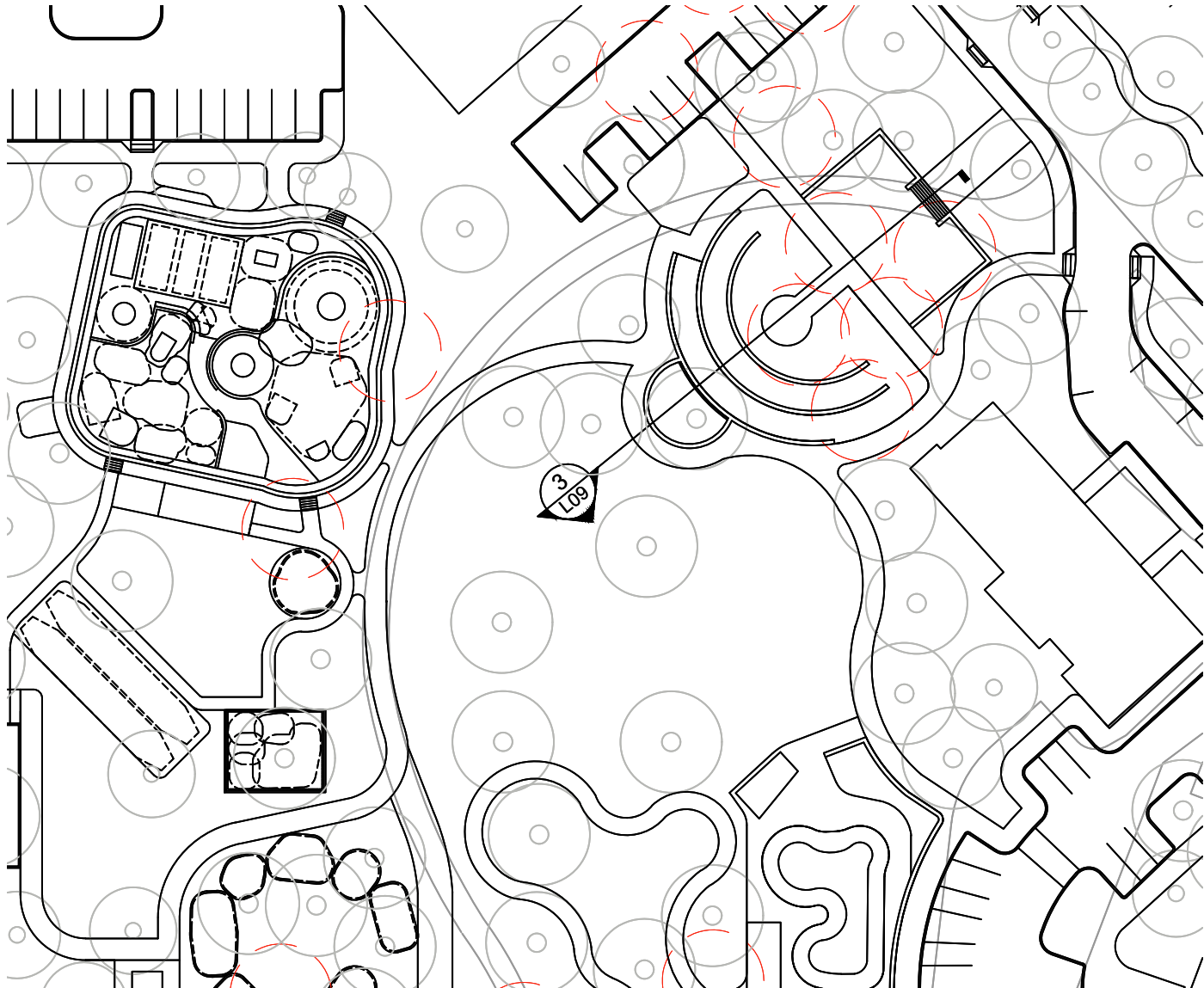
SECTION THROUGH PLAY PRECINCT
SCALE 1:100

KEY PLAN





KEY PLAN





SECTION THROUGH CARAVAN AND TRAILER PARKING AREA

