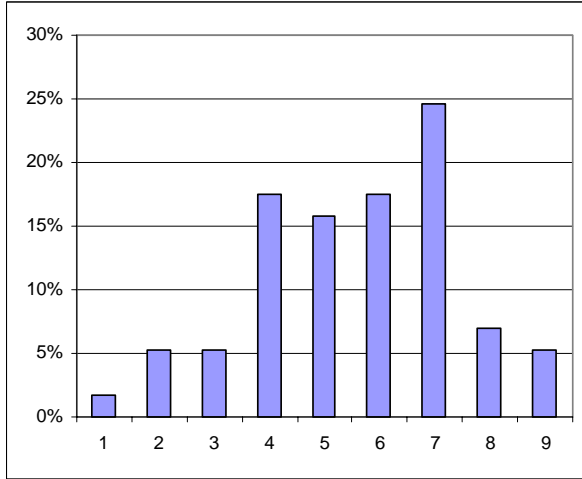


**SECTION A – CURRENT SERVICE PROVISION**

**STANDARD OF:-**

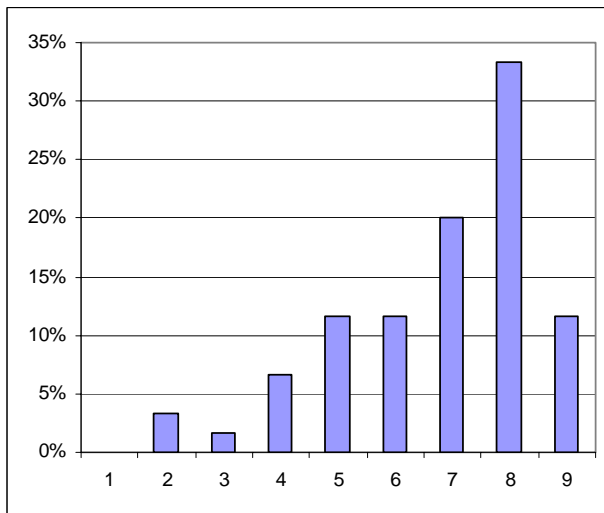
**1A Rural Roads**



<u>1a</u>	<u>Count</u>	<u>Percent</u>	<u>Accum%</u>
1	1	2%	2%
2	3	5%	7%
3	3	5%	12%
4	10	18%	30%
5	9	16%	46%
6	10	18%	63%
7	14	25%	88%
8	4	7%	95%
9	3	5%	100%
<b>Total</b>	<b>57</b>	<b>100%</b>	
<b>Median</b>	<b>6.00</b>		
<b>Mean</b>	<b>5.58</b>		
<b>Mode</b>	<b>7.00</b>		

<b>LEVEL OF SATISFACTION</b>		
year	Acceptable or Higher	Unacceptable
2008	70%	30%
2006	58%	42%

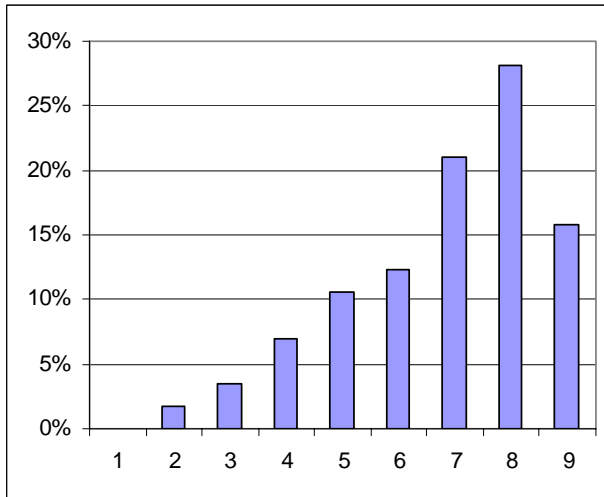
**1B Town Roads**



<u>1b</u>	<u>Count</u>	<u>Percent</u>	<u>Accum%</u>
1	0	0%	0%
2	2	3%	3%
3	1	2%	5%
4	4	7%	12%
5	7	12%	23%
6	7	12%	35%
7	12	20%	55%
8	20	33%	88%
9	7	12%	100%
	<b>60</b>	<b>100%</b>	
<b>Median</b>	<b>7.00</b>		
<b>Mean</b>	<b>6.78</b>		
<b>Mode</b>	<b>8.00</b>		

<b>LEVEL OF SATISFACTION</b>		
year	Acceptable or Higher	Unacceptable
2008	88%	12%
2006	94%	6%

**1C Presentation of town including parks and gardens**

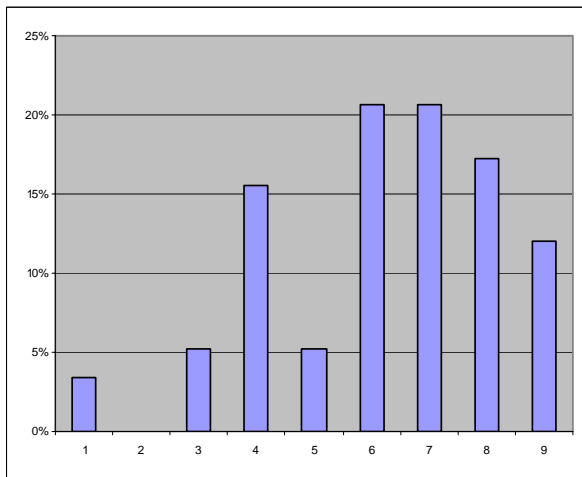


<u>1c</u>	<u>Count</u>	<u>Percent</u>	<u>Accum%</u>
1	0	0%	0%
2	1	2%	2%
3	2	4%	5%
4	4	7%	12%
5	6	11%	23%
6	7	12%	35%
7	12	21%	56%
8	16	28%	84%
9	9	16%	100%
<hr/>			
		<b>57</b>	<b>100%</b>

**Median 7.00**  
**Mean 7.29**  
**Mode 8.00**

LEVEL OF SATISFACTION		
year	Acceptable or Higher	Unacceptable
2008	88%	12%
2006	92%	8%

**1D Town footpaths**

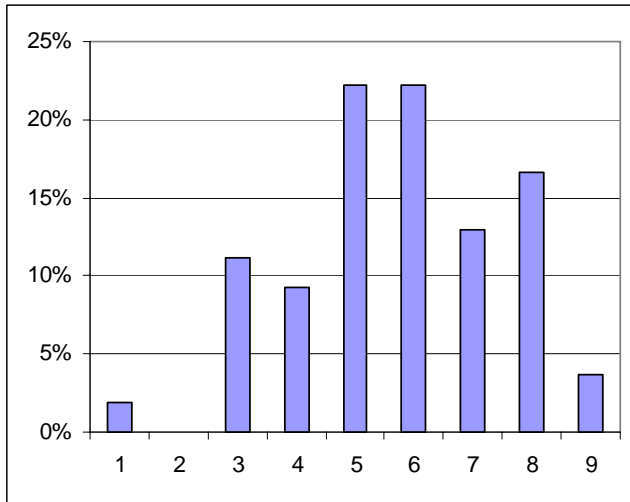


<u>1d</u>	<u>Count</u>	<u>Percent</u>	<u>Accum%</u>
1	2	3%	3%
2	0	0%	3%
3	3	5%	9%
4	9	16%	24%
5	3	5%	29%
6	12	21%	50%
7	12	21%	71%
8	10	17%	88%
9	7	12%	100%
<hr/>			
		<b>58</b>	<b>100%</b>

**Median 6.50**  
**Mean 6.22**  
**Mode 6.00**

LEVEL OF SATISFACTION		
year	Acceptable or Higher	Unacceptable
2008	76%	24%
2006	78%	22%

**1E Town Stormwater drainage**



<b>1e</b>	<u>Count</u>	<u>Percent</u>	<u>Accum%</u>
1	1	2%	2%
2	0	0%	2%
3	6	11%	13%
4	5	9%	22%
5	12	22%	44%
6	12	22%	67%
7	7	13%	80%
8	9	17%	96%
9	2	4%	100%
<b>54</b>		<b>100%</b>	

*Median*            **6.00**  
*Mean*              **5.74**  
*Mode*               **5.00**

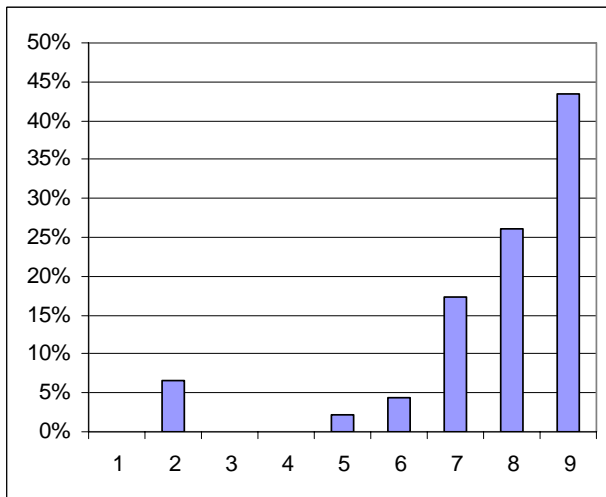
<b>LEVEL OF SATISFACTION</b>		
year	Acceptable or Higher	Unacceptable
2008	78%	22%
2006	82%	18%

**Have you used the following facilities in the last 12 months?**

**2A Swimming pool**

47% of respondents had visited the Swimming Pool facility

**How would you rate the quality of this facility?**



<b>2a.1</b>	<u>Count</u>	<u>Percent</u>	<u>Accum%</u>
1	0	0%	0%
2	2	4%	4%
3	0	0%	4%
4	0	0%	4%
5	1	2%	7%
6	2	4%	11%
7	8	17%	28%
8	12	26%	54%
9	21	46%	100%
<b>46</b>		<b>100%</b>	

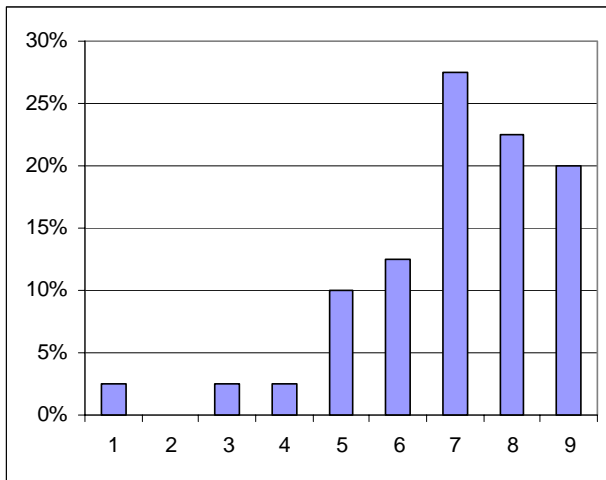
*Median*            **8.00**  
*Mean*              **7.87**  
*Mode*               **9.00**

<b>LEVEL OF SATISFACTION</b>		
year	Acceptable or Higher	Unacceptable
2008	96%	4%
2006	93%	7%

**2B Recreation Grounds**

40% of respondents had visited the Recreation Grounds in the last 12 months.

How would you rate the quality of this facility?



2b	<u>Count</u>	<u>Percent</u>	<u>Accum%</u>
1	1	3%	3%
2	0	0%	3%
3	1	3%	5%
4	1	3%	8%
5	4	10%	18%
6	5	13%	30%
7	11	28%	58%
8	9	23%	80%
9	8	20%	100%
<b>40</b>		<b>100%</b>	

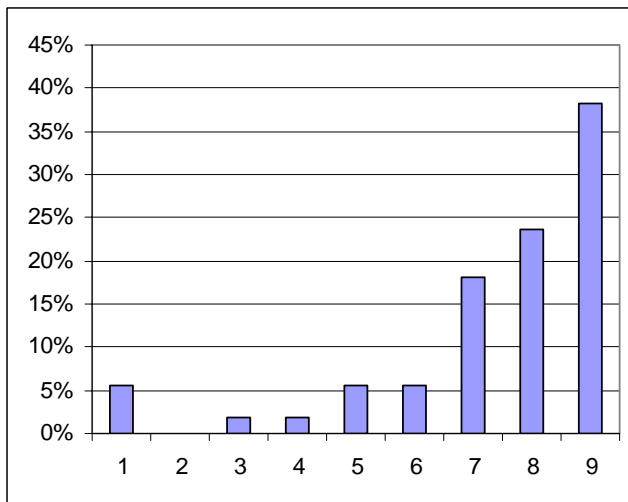
**Median**            **7.00**  
**Mean**              **6.98**  
**Mode**               **7.00**

LEVEL OF SATISFACTION		
year	Acceptable or Higher	Unacceptable
2008	93%	7%
2006	82%	18%

**2C Landfill Recycling Site**

80% of respondents had visited the Landfill Recycling Site in the last 12 months.

How would you rate the quality of this facility?



2c	<u>Count</u>	<u>Percent</u>	<u>Accum%</u>
1	3	5%	5%
2	0	0%	5%
3	1	2%	7%
4	1	2%	9%
5	3	5%	15%
6	3	5%	20%
7	10	18%	38%
8	13	24%	62%
9	21	38%	100%
<b>55</b>		<b>100%</b>	

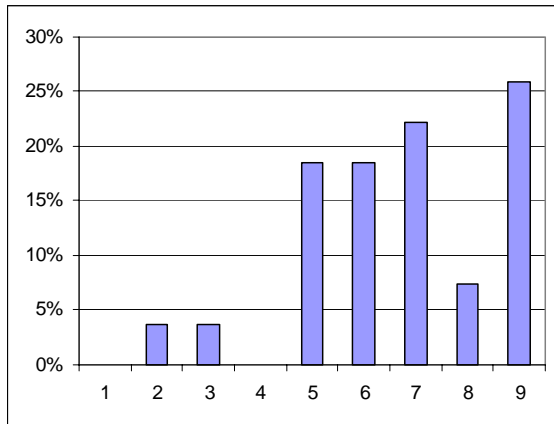
**Median**            **8.00**  
**Mean**              **7.38**  
**Mode**               **9.00**

LEVEL OF SATISFACTION		
year	Acceptable or Higher	Unacceptable
2008	91%	9%
2006	94%	6%

**2D Library**

52% of respondents had visited the Library in the last 12 months

**How would you rate the quality of this facility?**



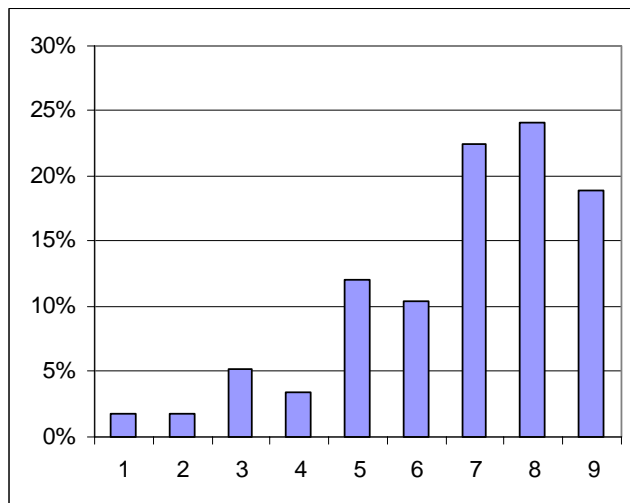
2d	Count	Percent	Accum%
1	0	0%	0%
2	0	0%	0%
3	0	0%	0%
4	2	5%	5%
5	6	15%	21%
6	9	23%	44%
7	13	33%	77%
8	4	10%	87%
9	5	13%	100%
<b>39</b>		<b>100%</b>	

**Median** 7.00  
**Mean** 6.67  
**Mode** 7.00

LEVEL OF SATISFACTION		
year	Acceptable or Higher	Unacceptable
2008	95%	5%
2006	93%	7%

**How would you rate the level of service and facilities provided for:-**

**3A Aged / Seniors**



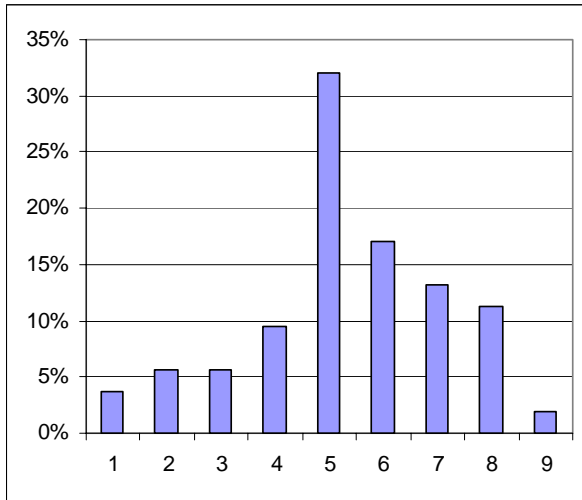
3a	Count	Percent	Accum%
1	1	2%	2%
2	1	2%	3%
3	3	5%	9%
4	2	3%	12%
5	7	12%	24%
6	6	10%	34%
7	13	22%	57%
8	14	24%	81%
9	11	19%	100%
<b>58</b>		<b>100%</b>	

**Median** 7.00  
**Mean** 6.78  
**Mode** 8.00

LEVEL OF SATISFACTION		
year	Acceptable or Higher	Unacceptable
2008	88%	12%
2006	87%	13%

**SECTION A**

**3B Youth / Teenagers**

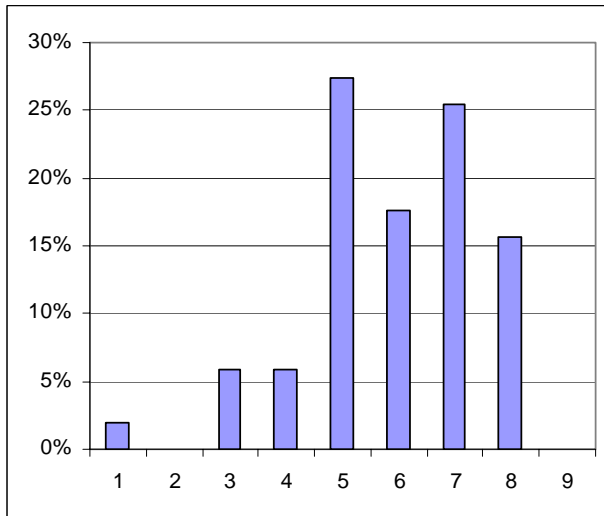


<b>3b</b>	<u>Count</u>	<u>Percent</u>	<u>Accum%</u>
1	2	4%	4%
2	3	6%	9%
3	3	6%	15%
4	5	9%	25%
5	17	32%	57%
6	9	17%	74%
7	7	13%	87%
8	6	11%	98%
9	1	2%	100%
<hr/>			
53		100%	

**Median**            **5.00**  
**Mean**                **5.32**  
**Mode**                **5.00**

<b>LEVEL OF SATISFACTION</b>		
year	Acceptable or Higher	Unacceptable
2008	75%	25%
2006	77%	23%

**3C Children under 12 years of age**

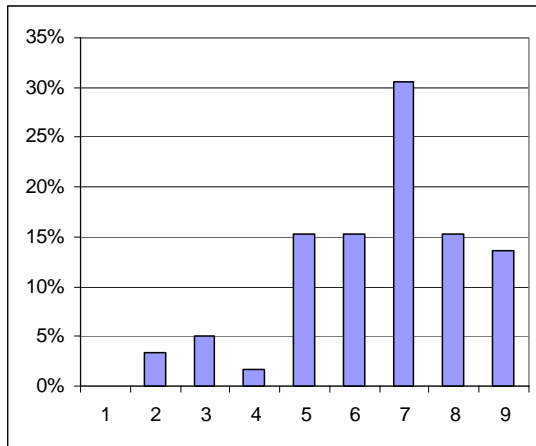


<b>3c</b>	<u>Count</u>	<u>Percent</u>	<u>Accum%</u>
1	1	2%	2%
2	0	0%	2%
3	3	6%	8%
4	3	6%	14%
5	14	27%	41%
6	9	18%	59%
7	13	25%	84%
8	8	16%	100%
9	0	0%	100%
<hr/>			
51		100%	

**Median**            **6.00**  
**Mean**                **5.90**  
**Mode**                **5.00**

<b>LEVEL OF SATISFACTION</b>		
year	Acceptable or Higher	Unacceptable
2008	86%	14%
2006	80%	20%

**3D The public general**



3d	<u>Count</u>	<u>Percent</u>	<u>Accum%</u>
1	0	0%	0%
2	2	3%	3%
3	3	5%	8%
4	1	2%	10%
5	9	15%	25%
6	9	15%	41%
7	18	31%	71%
8	9	15%	86%
9	8	14%	100%
	<b>59</b>	<b>100%</b>	

**Median**            **7.00**  
**Mean**              **6.54**  
**Mode**               **7.00**

LEVEL OF SATISFACTION		
year	Acceptable or Higher	Unacceptable
2008	90%	10%
2006	89%	11%

**Comments from the respondents**

- *Trees on some gravel roads need lopping back.*
- *I think the drive into town does not welcome people in with the crap wooden houses opposite Powertrak. These are a disgrace and should be knocked down. The drive into town should have more appeal.*
- *Rural roads Gibbs Road poor.*
- *Swimming Pool toilets need to be cleaner. Youth/Teenagers, improving so much – good to see.*
- *We disagree with the trees planted on roads (streets) in town. Taking up parking space.*
- *I think our footpaths and car parking are not very well designed for our seniors or disabled persons. Some of the road work carried out in town by the Shire is well below standard.*
- *The public generally should be canvassed and asked to assist in community activities (If you ask enough, you'll get a reaction) Retired men should have a shed/workshop to meet in. we need an over 30's singles club. We need a properly run youth club in a hall where teenagers achievements are recognized as a "right of passage" to adulthood. Under 12's need a "talent development" club.*
- *Where is the visibility of YAC type services? What are the issues with Medical Services? What are the transport options?*
- *Day care centre not open full time and after school care.*
- *I would recycle more if we had recycle bins.*
- *The youth have nothing to do except ride their bikes, hang around the Deli etc. not all people this age are 'sporty'. Call Andre at M/up Family Centre for advice and suggestions*
- *More disabled parking outside Dr's surgery.*